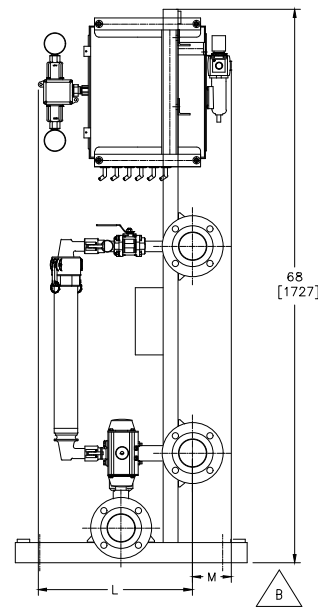
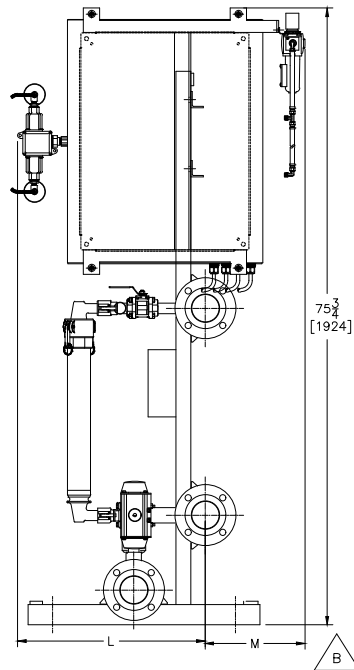
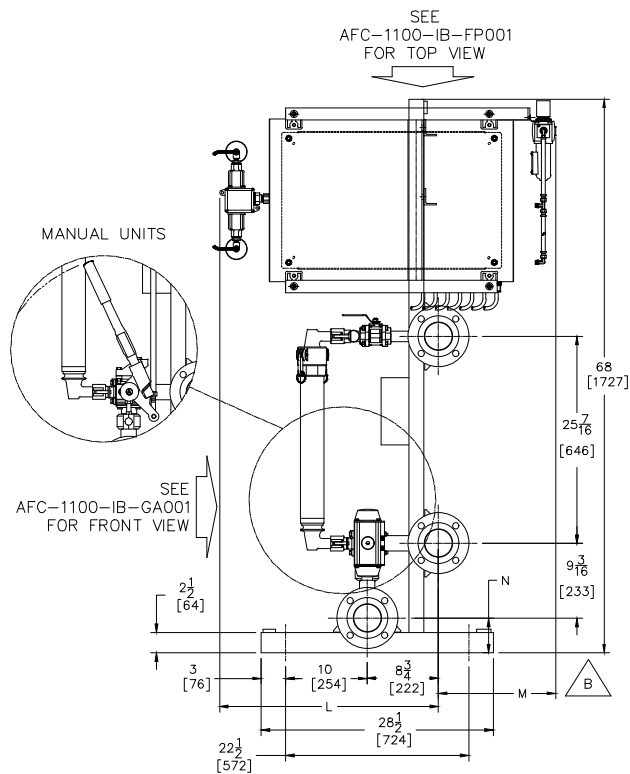
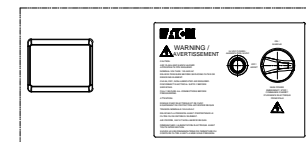


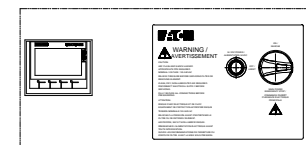
REVISIONS				
REV	DESCRIPTION	BY	ECO	DATE
B	REVISED FOR STANDARD CONTROL PANEL	NISHANT S	0219116	8/14/2022
C	UPDATED TITLE BLOCK AND BORDER	NISHANT S	0226045	9/16/2022



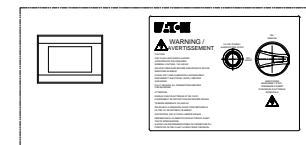
FOR DIMENSION  
TABLES SEE  
AFC-1100-IB-DT001



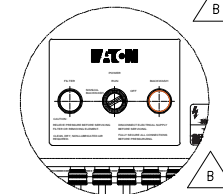
ALLEN-BRADLEY CONTROL  
PANEL COVER VIEW



SIEMENS CONTROL PANEL  
COVER VIEW




EATON CONTROL PANEL COVER  
VIEW



SEMI-AUTO CONTROL PANEL  
COVER VIEW

#### NOTES:

- ALL FLANGED PROCESS CONNECTIONS ARE LAP JOINT TYPE, ZINC PLATED CARBON STEEL.
- PROCESS FLANGE CONNECTIONS ARE DRILLED TO ANSI, CLASS 150 OR DIN ND16.
- HEADERS MAY BE PIPED AT EITHER END; BLIND FLANGES (PURCHASER SUPPLIED) REQUIRED FOR OPPOSITE END.
- CONTROL PANEL IS EXCLUSIVE TO AUTOMATED UNITS.
- 1/4" VALVES (ON INLET/OUTLET HEADERS) ARE EXCLUSIVE TO AUTOMATED UNITS. MANUAL UNITS ARE EQUIPPED WITH GAUGES (1/4" NPT) AT THESE POSITIONS.
- HANDLE EXTENSIONS ARE PROVIDED AT EACH STATION ON MANUAL UNITS.
- ALL METALLIC WETTED PARTS ARE 316 STAINLESS STEEL.
- AUTOMATION AIR REQUIREMENTS: 5 SCFM [142 LITERS/MIN] MAXIMUM DEMAND AT 60 PSI [4.1 BAR] MIN, 120 PSI [8.2 BAR] MAX.
- ALL DIMENSIONS ARE IN INCHES [MM].
- FILTER ELEMENTS ARE DESIGNED TO WITHSTAND 150 PSI [10.3 BAR] DIFFERENTIAL PRESSURE.
- OPERATING PRESSURE IS (SEE SHEET AFC1100IB-4). HYDROSTATIC TEST PRESSURE IS (SEE SHEET AFC1100IB-4).
- EXTERIOR FINISH:  
TOP COAT: 1 MIL MINIMUM.  
COLOR: SILVER.

DRAWN BY R. BUFFA		<div>EATON FILTRATION, LLC DESIGN CENTER</div>			
SCALE AS DRAWN					
RESTRICTION RESTRICTED		TITLE  AFC-1100 INTERNAL BACKWASH FILTER INLINE RIGHT END VIEW			
SHEET 1 OF 1					
PROJECTION THIRD ANGLE		DATE 05/10/05	SIZE A	DWG FILENAME AFC-1100-IB-RE001	REV C

EATON CORPORATION - CONFIDENTIAL AND PROPRIETARY NOTICE TO PERSONS RECEIVING THIS DRAWING AND/OR TECHNICAL INFORMATION  
THIS DOCUMENT, INCLUDING THE DRAWING AND INFORMATION CONTAINED THEREON IS CONFIDENTIAL AND IS THE EXCLUSIVE PROPERTY OF EATON. AT ANY TIME, BY TAKING THE POSSESSION OF THIS DOCUMENT THE RECIPIENT ACKNOWLEDGES AND AGREES THAT THIS DOCUMENT CANNOT BE USED IN ANY MANNER ADVERSE TO THE INTEREST OF EATON AND THAT NO PORTION OF THIS DRAWING MAY BE COPIED OR OTHERWISE REPRODUCED WITHOUT THE PRIOR WRITTEN CONSENT OF EATON, IN THE CASE OF CONFLICTING CONTRACTUAL PROVISIONS, THIS NOTICE SHALL GOVERN THE STATUS OF THIS DOCUMENT.  
2022 EATON CORPORATION - ALL RIGHTS RESERVED.