

Chevin LED

2



The popular and well proven Chevin family is now enhanced by LED variants with the addition of Chevin LED.

The sleek low profile housing is available in 2 widths and lengths to match existing fluorescent luminaires, making it ideal for retrofit applications, and incorporates a retained opal polycarbonate optical panel, retained for hands free installation. Options include; 3 hour combined non-maintained emergency functionality, dimmable control gear and integrated lighting controls options to maximise energy savings, user comfort and control.

With a comprehensive range of lumen outputs from the linear LED light engines, Chevin LED delivers choice and flexibility to suit a wide range of applications where a cost effective direct surface mounted or suspended solution is required.

- Nominal 4' and 5' formats, in narrow and wide housings, ideal for both new and retro fit applications
- Slim and attractive profile to blend into most environments
- Integrated lighting control options to maximise energy saving, user comfort and control.
- Integral 3hr combined non-maintained functionality option
- High efficacy luminaire performance to exceed building regulation requirements with lumen packages to match and exceed traditional fluorescent technology with reduced energy consumption

Light Source and Control Gear

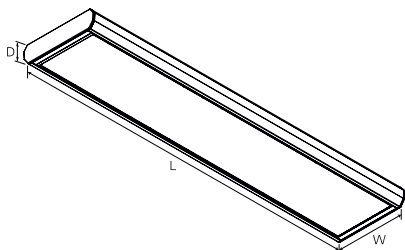
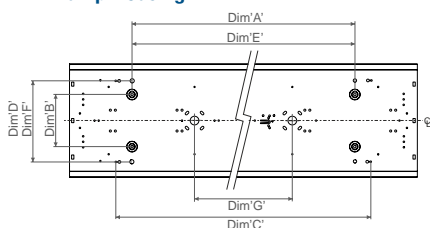
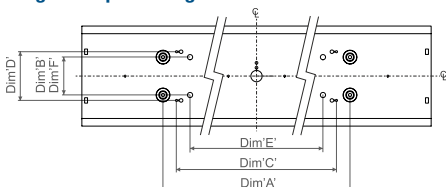
- High efficacy linear LED light engines
- >80CRI, 4000°K
- Energy efficient fixed output control gear as standard
- DALI dimmable control gear option

Materials

- Body and gear tray– Sheet steel, powder coated in RAL9016 white finish
- End caps – injection moulded ABS, colour matched to the body
- Diffuser – TPa rated, fire retardant, UV stabilised polycarbonate (single/narrow versions only) TPb, rated for twin/wide versions

Options

- DALI dimming option
- Intelligent light and energy management options:
 - End mounted IP20 rated sensor with switching or dimming function, with/without photocell.
- 'Corridor Function' control available to special order with the 'CO' suffix
- Fully integral combined non-maintained emergency, 3 hour duration. Suitable for use on defined escape routes.
- We offer a range of product support contracts to aid commissioning, reduce your maintenance costs, comply with legislative test requirements and maximise the lifespan of your lighting equipment.

Dimensions**Twin Lamp Housing****Single Lamp Housing**

Lamp Rating	Surface Mounted		Suspended		8mm Drop Rod		Besa Entry	L (mm)	W (mm)	D (mm)
Option	A	B	C	D	E	F	G			
Single 4ft	900	70	850*	90*	800	70	n/a	1212	185	65
Twin 4ft	900	125	977	180*	900	180	600	1212	271	65
Single 5ft	900	70	850*	90*	800	70	n/a	1512	185	65
Twin 5ft	900	125	977	180*	900	180	600	1512	271	65

Feature width "D" given for reference, please note suspension wire is mounted on centre line at the mounting surface.

Installation Notes

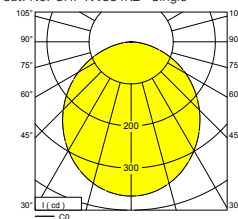
- Suitable for direct fix or suspended mounting (suspension kits contain a pair of drop wires and must be ordered as separate items)
- BESA fixings available on the rear of the wide 'twin' housing at 600mm centres. (central cable entry hole in BESA may be covered on some versions depending on control gear, outer fixing holes remain accessible)
- Terminal block with 2 x 2.5mm² cable capacity per termination
- Gear tray and optical panel hang from the body for ease of install

Specification

To specify state: Slim profile surface/suspended LED luminaire, 65mm deep with retained opal diffuser panel, as Eaton's Chevin LED range, part no. _____

Photometric Data

Cat. No. CHP4W384KZ - Single



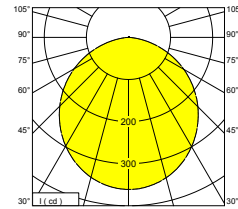
SHR nom: 1.50
SHR max: 1.534

Utilisation factors / TM5

Reflectances			Room Index							
C	W	F	0.75	1.0	1.25	1.5	2.0	2.5	3.0	4.0 5.0
70	50	20	61	69	77	82	89	93	97	101 104
70	30	20	53	62	69	75	83	88	92	97 100
70	10	20	48	56	64	70	78	84	88	94 98
50	50	20	59	67	74	79	86	90	93	97 100
50	30	20	53	61	68	73	81	85	89	94 97
50	10	20	48	56	63	69	76	82	86	91 94
30	50	20	58	65	72	76	83	87	90	93 96
30	30	20	52	59	67	72	78	83	86	91 94
30	10	20	47	55	62	68	75	80	84	88 92
0	0	0	45	53	60	65	71	76	80	84 87
BZ-class			4	4	4	4	4	4	4	4

See page 468 for design guide

Cat. No. CHP5W684KZ - Twin



SHR nom: 1.50
SHR max: 1.580

Utilisation factors / TM5

Reflectances			Room Index							
C	W	F	0.75	1.0	1.25	1.5	2.0	2.5	3.0	4.0 5.0
70	50	20	61	69	76	82	89	93	97	101 104
70	30	20	53	62	69	75	83	88	92	97 101
70	10	20	48	56	64	70	78	84	88	94 98
50	50	20	59	67	74	79	86	90	93	97 100
50	30	20	52	60	68	73	81	85	89	94 97
50	10	20	48	55	63	69	76	82	86	91 94
30	50	20	58	65	72	76	83	87	90	93 96
30	30	20	52	59	67	72	78	83	86	91 94
30	10	20	47	55	62	67	75	80	84	88 92
0	0	0	45	52	60	65	71	76	80	84 87
BZ-class			4	4	4	4	4	4	4	4

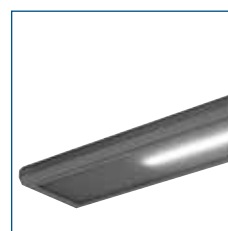
See page 468 for design guide



Chevin LED twin open



Chevin LED twin linear LED boards showing

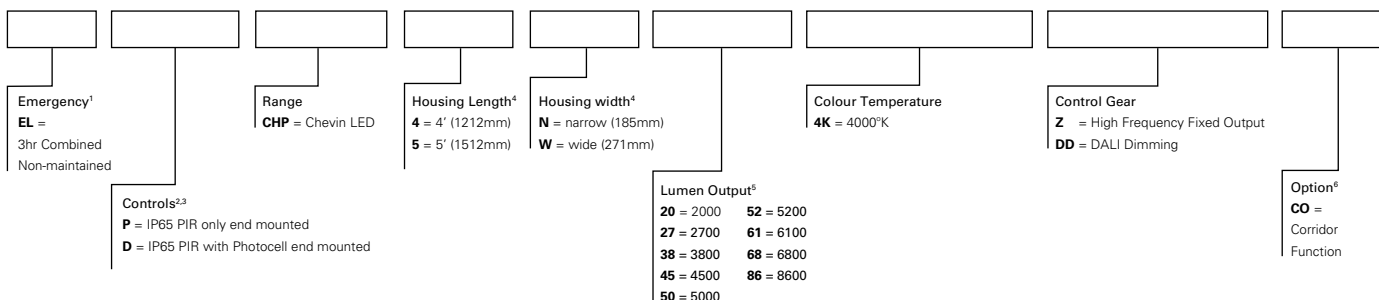


Chevin LED twin in emergency mode



Chevin LED batten fit IP20 sensor

Catalogue Numbers



- Emergency versions use a dedicated LED which operates only when in emergency mode
- The 'P' prefix sensor is a switching PIR only for use on fixed output control gear (unless in-conjunction with DD and CO for Corridor Function)
The 'D' prefix sensor is a switching PIR with photocell, the control gear option dictates the sensor type i.e:
Switching with a threshold sensor for HF gear, DALI digital dimming gear uses a regulating photocell version
- 'P' and 'D' prefix sensors are mounted in the end of the luminaire, they are IP20 rated and suitable for upto 5m mounting heights
- Please refer to the dimension table and diagram for exact dimensions
- The lumen output values are not all available in all lengths, please refer to HF catalogue listing
- 'Corridor Function' is a Tridonic specific option available with their dimmable control gear, this 'CO' suffix must be added to ensure the correct drives is used. Add the 'CO' after the DD suffix.

Luminaire Example

Cat No	Description
ELDCHP5W454KDD	Chevin LED 5', 4500lm, wide housing, 4000K, DALI, with integral combined non-maintained emergency functionality and fitted with end mounted IP20 PIR/photocell DALI sensor

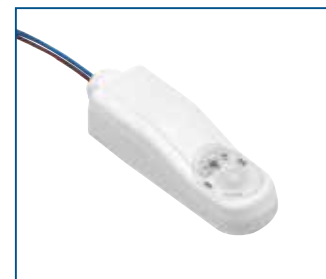
Catalogue Numbers

Catalogue Numbers					Weight (kg)	
Cat No	Description	Lumen Output (lm)	Circuit Watts (W)	Efficacy (Llm/cW)	Standard	EL
Standard Fixed Output						
CHP4N204KZ	Chevin LED 2000 4000K HF 1.2m single	2018	19.89	101.5	3.78	4.12
CHP4N374KZ	Chevin LED 3700 4000K HF 1.2m single	3734	40.99	91.1	3.78	4.12
CHP4W384KZ	Chevin LED 3800 4000K HF 1.2m twin	3899	32.67	119.4	5.19	5.53
CHP4W504KZ	Chevin LED 5000 4000K HF 1.2m twin	5133	44.69	114.9	5.19	5.53
CHP5N274KZ	Chevin LED 2700 4000K HF 1.5m single	2728	25.97	105.0	4.58	4.92
CHP5N454KZ	Chevin LED 4500 4000K HF 1.5m single	4592	48.51	94.7	4.58	4.92
CHP5W524KZ	Chevin LED 5200 4000K HF 1.5m twin	5230	43.02	121.6	6.48	6.82
CHP5W614KZ	Chevin LED 6100 4000K HF 1.5m twin	6189	52.20	118.6	6.48	6.82
CHP5W684KZ	Chevin LED 6800 4000K HF 1.5m twin	6889	59.29	116.4	6.48	6.82
CHP5W864KZ	Chevin LED 8600 4000K HF 1.5m twin	8626	78.03	110.6	6.48	6.82

Accessories

Description	Cat No	Weight (kg)
Chevin Suspension Kit, 1.5m drop wire (pair)	CHPSKIT	0.10

For Emergency versions please add the EL prefix, e.g. CHP5N454KZ becomes ELCHP5N454KZ.
For Emergency versions the circuit watts will increase by 1.5W to account for the charging circuit.
For DALI dimmable options please replace the Z suffix with DD e.g. CHP5N454KZ becomes CHP5N454KDD
Refer to the Catalogue number matrix for other options.
For further information contact our technical support and application department on 01302 303240 or email
LightingTechnicalUK@Eaton.com



Batten fit sensor - IP20 sensor

For more information on the installation requirements and product specifications, please visit our website: <https://uk.eaton.com/content/gb/en/products/product-catalog/chevin-led-linear-surface-mount-led-ceiling-light.html>