

Description

The Eaton Type 7100 is a tank-mounted double-ended submerged fuel pump incorporating an integral fuel-flooded, three-phase AC induction motor. The pump has multi-stage impellers and provides an uninterrupted fuel supply during normal flight and negative G conditions. Pump performance is maintained at high rates of climb and at extreme altitudes with a wide range of fuel temperatures.

The unit has a dry running capability and incorporates a pressure switch, which indicates when low fuel pressure conditions arise and a thermal device which interrupts the AC supply to the motor should overheating occur. The good pump-down capability of this unit minimises the quantity of unusable fuel.

Fully flooded operation, enabling lubrication and cooling, together with the brushless AC induction motor are features which greatly enhance the long life and high reliability of this unit.

Design Features

- Three-phase AC induction motor-driven
- Compact and efficient
- Operates in inverted flight and negative G conditions
- Reliable, maintenance-free operation minimises life cycle costs
- Incorporates a low fuel pressure switch
- Explosion-proof and thermally protected
- Excellent pump-down capability
- Dry running capability

Application

- Tornado

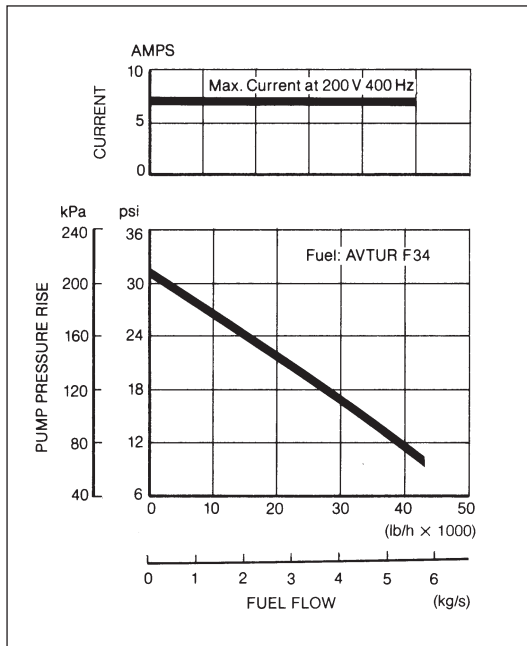


Powering Business Worldwide

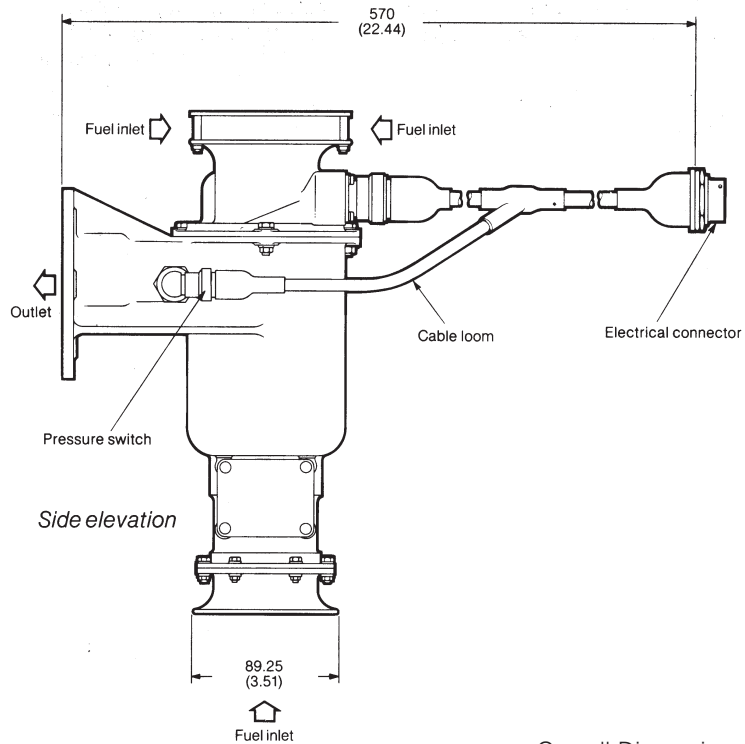
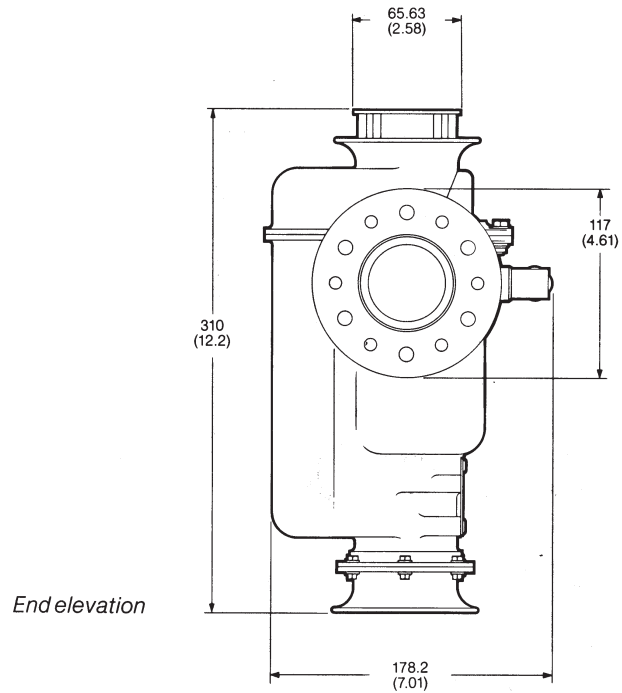
Specification

Pump (8904) Part No. 568-1-24730
 Power Supply 200V 400Hz 3 Phase
 Flow Rate 5kg/sec (39,000lb/hr)
 Delivery Pressure 55kPa (8psig)
 Current Consumption 7.1A
 Weight 3.4kg (7.5lb)

Typical Performance Curves



Pump Type 7100



Overall Dimensions
shown in mm (in)