

Description

Twin Eaton pumps, Type 8401, are fitted in a single manifold Type 8402, forming an assembly Type 8403 which is mounted on the fuel tank by a single flange. The manifold also incorporates a suction bypass valve.

In the event of an outlet pipe fracturing, a flow limiting feature prevents excessive loss of fuel and, in an emergency, check valves permit each pump to operate singularly.

Pumps are fully flooded providing lubrication and cooling of the motor and bearings. Heat paths in the bearings allow dry running for several hours if necessary.

Pump capability at high altitudes is improved by an air/vapour guide cone, separating air before the main impeller.

A strainer in the inlet ensures protection against ingestion of foreign bodies - just one of the many features of the design intended to provide long life and high reliability.

Design Features

- Flow limiting feature prevents excessive fuel loss
- Exceptionally lightweight
- Two pumps on single mounting
- One pump operation capability
- Flameproof and thermally protected
- Compatible with anti-misting kerosene (AMK)
- Protected against debris ingestion
- Provides vapour-free fuel
- Flooded motor and bearings

The boost pump is extremely light in weight, a design feature which is unique to this type of unit.

Application

- EH101

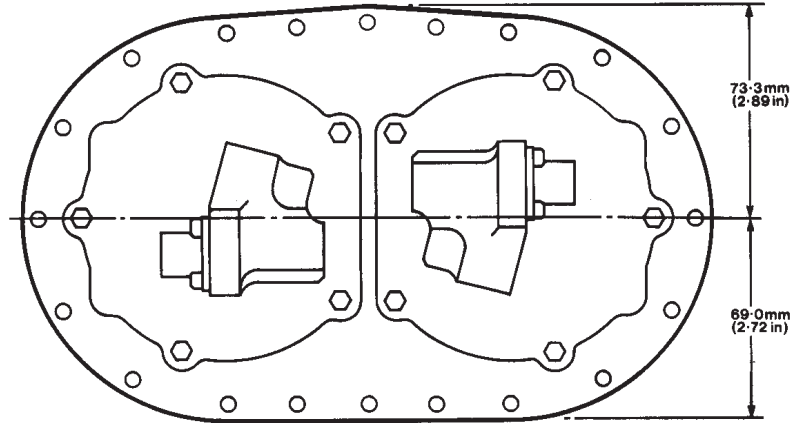


Powering Business Worldwide

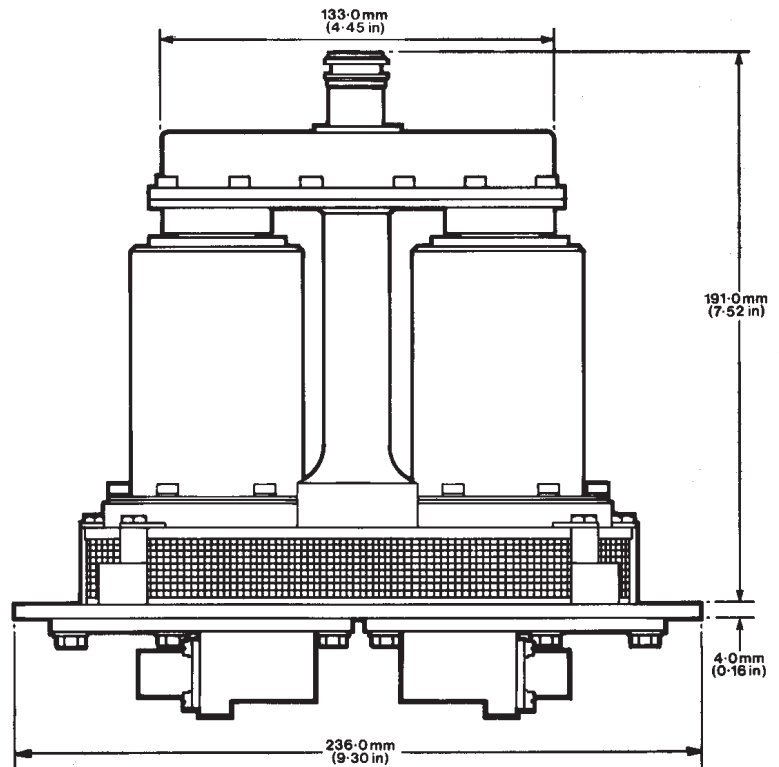
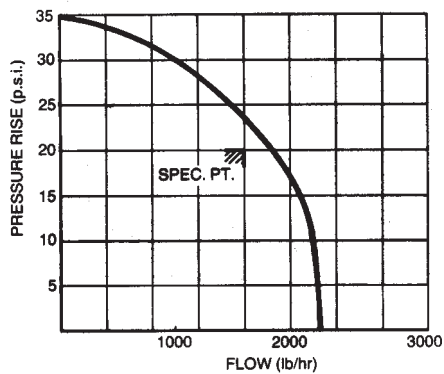
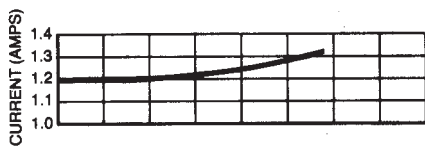
Specification

Pump Type 8403 Part No. 568-1-27350-002
 Power Supply 200V 400Hz 3 Phase
 Fluids Aviation Fuels
 Delivery (Single Pump) 138kPa (20psig)
 at 0.2kg/s 1600lb/hr
 242kPa (35psig) at zero flow
 Pump Weight 2 x 1.05kg (2.31lb)
 Manifold 0.72kg (1.60lb)
 Total 2.82kg (6.22lb)

Pump Type 8403



Typical Performance Curves



Overall Dimensions
shown in mm (in)