



This pump and its canister are installed in the wing and centre tanks of the A340 aircraft and the wing tanks of the A330. The pump provides exceptional performance for high climb rates and at high cruising altitudes with all conventional aviation fuels.

The 3-phase AC motor incorporated in the pump runs at approximately 12000 rpm. The pump provides a vapour-free fuel supply under normal flight conditions due to the centrifugal and air-separation action of the inducers and impellers in the unit. The pump contains thermal switches which interrupt the AC supply to the motor should overheating occur. The reliability and long

life of the unit are enhanced by the fully flooded operation of the electric motor which facilitates motor cooling and bearing lubrication.

The down time of the aircraft, should a failure occur, is greatly reduced due to easy removal/installation of the unit as the tanks do not require draining.

Design Features

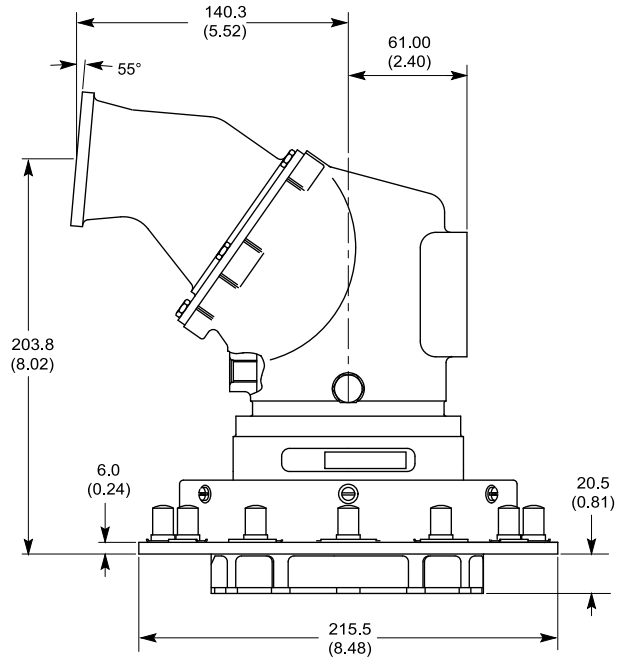
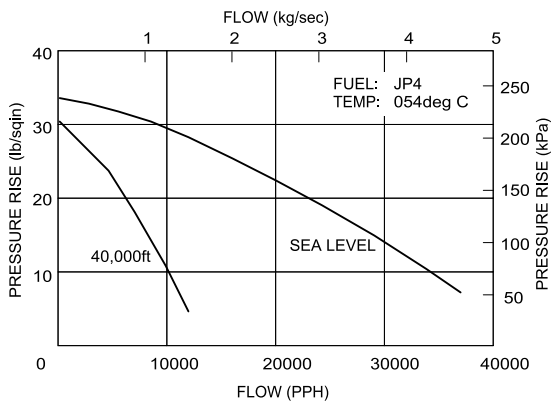
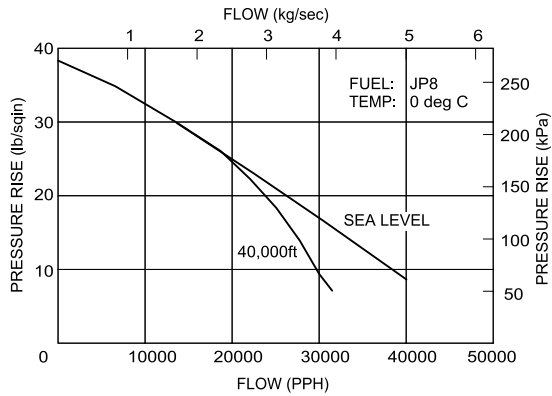
- Canister mounted
- Easily fitted or removed (without draining fuel tank)
- Provides vapour-free fuel
- Fuel cooled and lubricated bearings
- Three-phase induction motor
- Explosion proof and thermally protected
- Highly reliable
- Good reprime capability

Specification

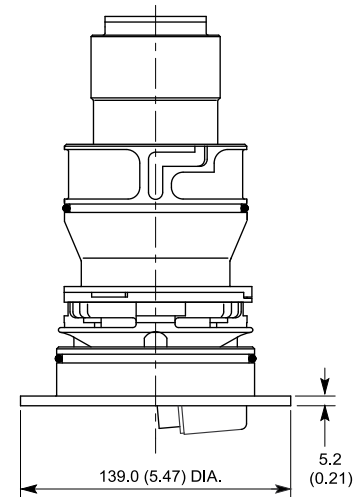
Pump (8810) Part No. 568-1-28300
 Canister (8811) Part No. 568-1-28301
 Power Supply 200V 400Hz 3 Phase
 Flow Rate 3kg/sec (24000lb/hr)
 Delivery Pressure 138kPa (20psig)
 Current Consumption 6.1A
 Weight 4.15kg (9.13lb)

Canister Type 8811

Typical Performance Curves



Pump Type 8810



Dimensions in mm (in)

Eaton Aerospace Limited
 Aerospace Group
Fuel & Motion Control Systems Division
 Abbey Park, Southampton Road
 Titchfield, Fareham
 Hampshire, PO14 4QA
 UK
 Tel: +44 (0)1329 853000
 Fax: +44 (0)1329 853797
www.eaton.com/aerospace