

Flexible horizontal adjustable splice plates without extension plate

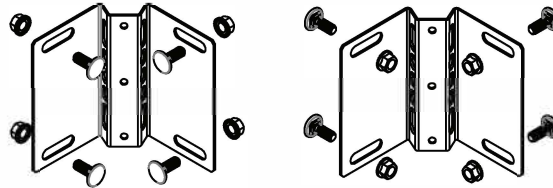
Series 2~5 Aluminum Cable Tray

The flexible horizontal adjustable splice plates are designed to allow for horizontal direction changes when standard horizontal fittings do not conform. The splices are furnished in pairs and include hardware. Bonding jumpers are not required.

These splices require supports within 24" (600mm) on both sides per NEMA VE2.

Catalog No.	Tray Width
9A-FSP(X)	Up to 36"

(X) = insert 4", 5", 6" or 7" side rail height.

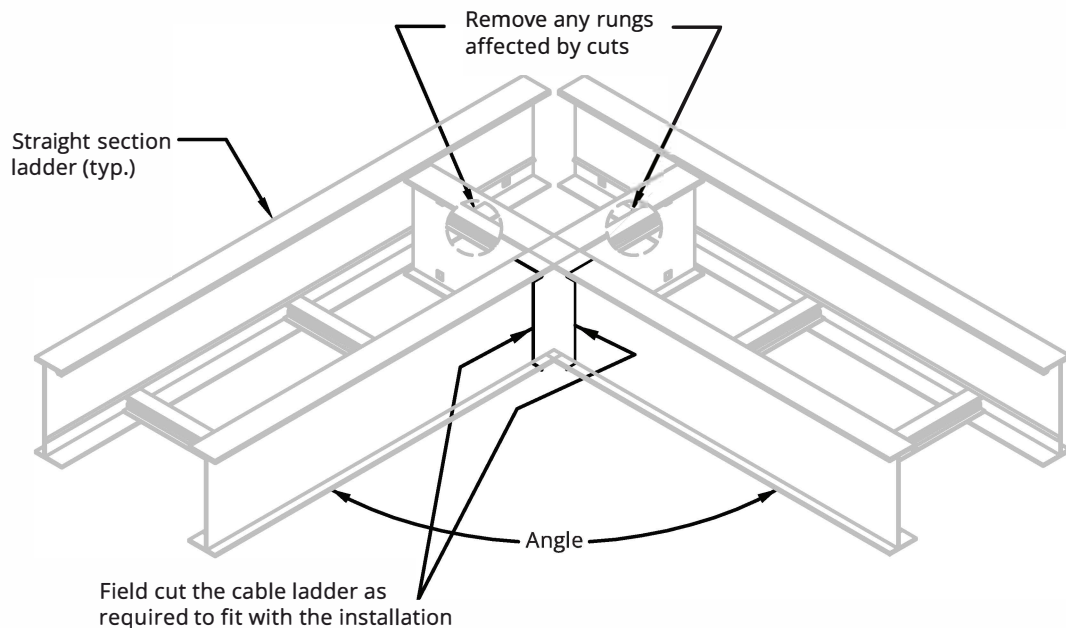


Installation Instructions

Tools Needed: Wrench, metal cutting machine or tool, and drill. (No special tools required.)

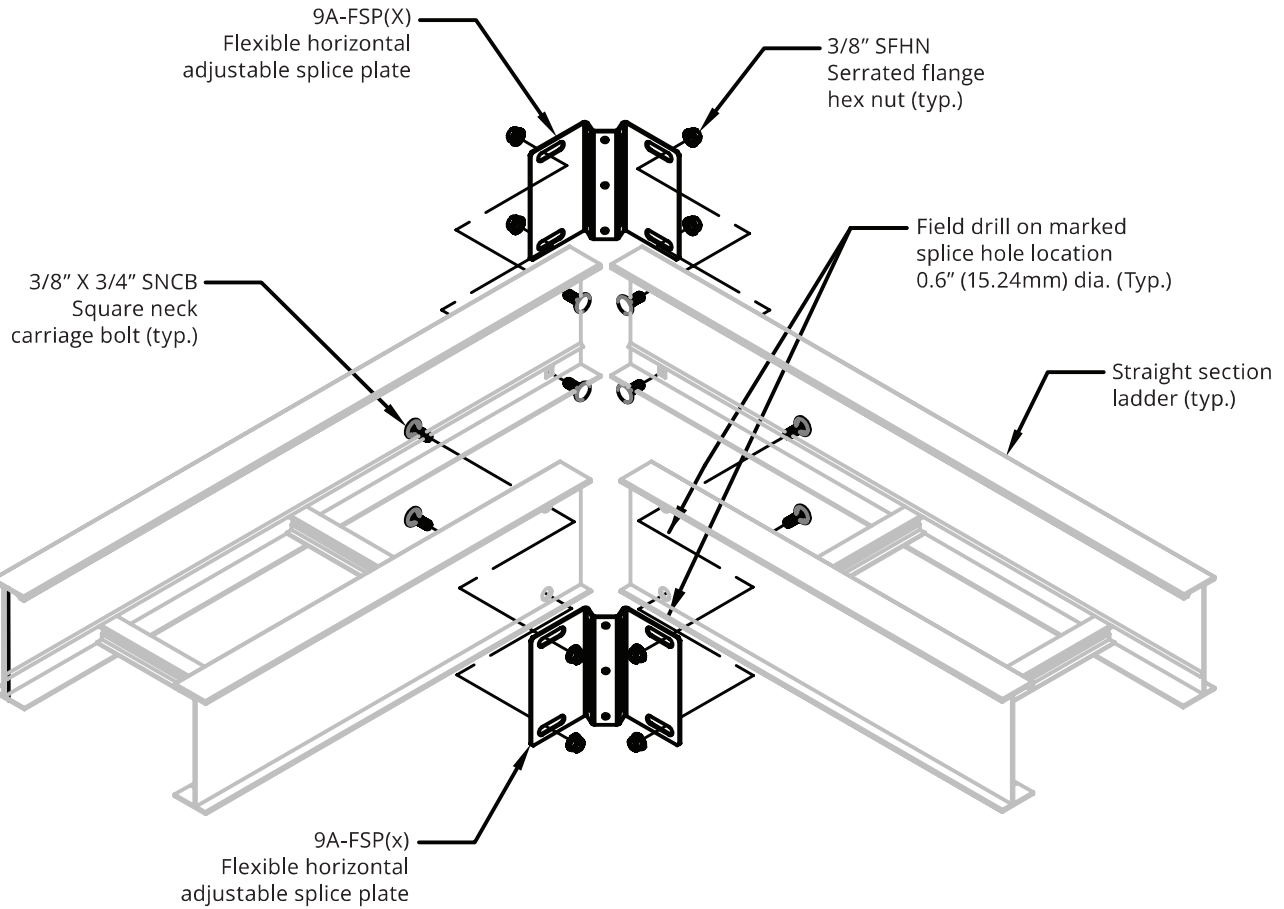
STEP 1. Prepare the cable tray and flexible horizontal adjustable splice plates and determine the desired angle to be made.

STEP 2. Field cut the cable tray/ladder based on the desired angle to be made to fit with the installation. Mark a line on the cable tray/ladder where the cutting will occur. Cut the cable tray using a metal cutting tool or machine. Be aware of the rung locations before making field cuts. If necessary, remove any rungs that may be affected by cuts.



Installation Instructions Flexible horizontal adjustable splice plate

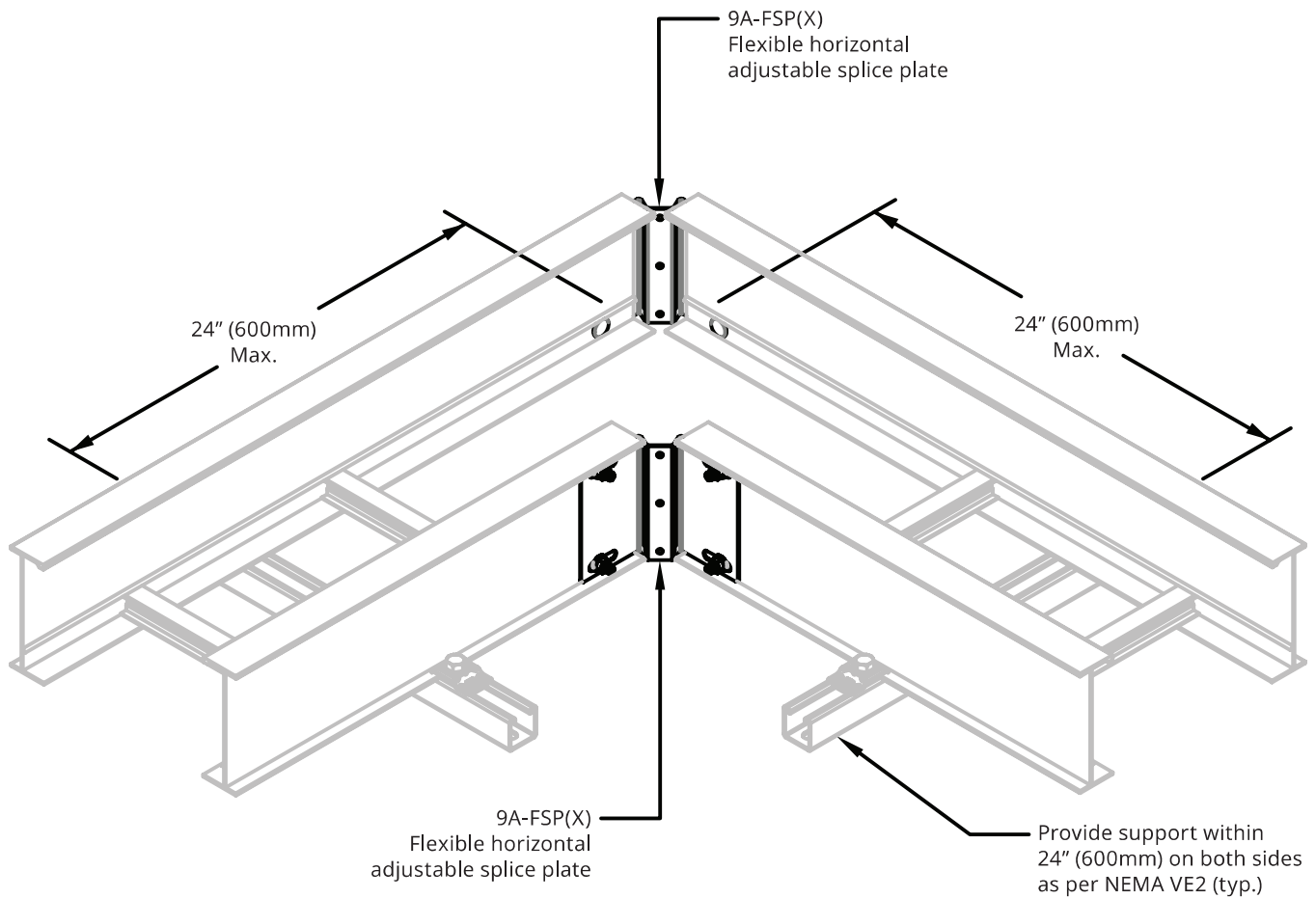
STEP 3. Align the flexible horizontal adjustable splice with the cable ladder and mark the hole locations by placing them onto the ladder and using its slots/holes as a stencil, then field drill the holes. Install the hardware as shown below. Torque all hardware to 19 ft-lbs.



ISO ASSEMBLY VIEW

Installation Instructions Flexible horizontal adjustable splice plate

STEP 4. Provide supports within 24" (600mm) on both sides as per NEMA VE2. Bonding jumper is not required.



ISO INSTALLED VIEW

STEP 5. Repeat prior steps for each flexible horizontal adjustable splice plates.

For additional information,
please visit [Eaton.com/cabletray](https://www.eaton.com/cabletray).