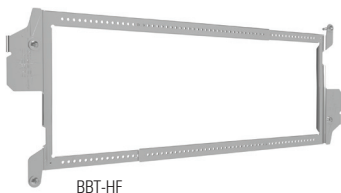


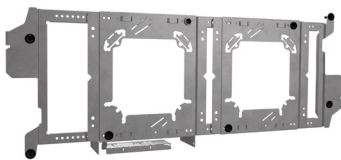
Wall studs



BBT-HF

Telescoping Bracket

With an auto-height adjustment, the rigid BBT-HF telescoping bracket is quick and easy to install. Simply slide the bracket to the width required and snap both ends of the bracket to the stud and secure with screws.



Telescoping bracket with BBA-4 and BBA added.

- Easily adjust to accommodate stud widths of 14½" thru 25"; a secure fit at all stud spacings
- Bracket includes an auto height adjustment feature
- Self-leveling when snapped onto stud, no need for additional leveling tools
- Easy to identify center line on both sides of the bracket
- Snap on feature works on 1¼" thru 1⅜" inch width studs
- For studs wider than 1⅜" utilize the BBT-WF
- Designed to mount boxes at the exact height on either side of the stud without overlap of adjacent brackets
- Continuous hole pattern allows for positioning of the box mounting bracket anywhere along the length of the bracket
- UL Listed for U.S. and Canada; CSA certified

Patent pending (all parts)

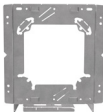
Catalog #	Description	Stud Spacing	Box Qty.
BBT-HF	Telescoping box bracket	14½" - 25"	25
BBT-WF	Telescoping box bracket for wide flange studs	14½" - 25"	25
BBA	Box mounting bracket	—	25
BBA-2	Box mounting bracket with backside support	2½"	25
BBA-4	Box mounting bracket with backside support	2½" - 6"	25



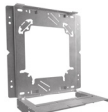
BBA-Front



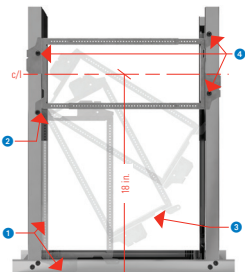
BBA-Back



BBA-4 Front



BBA-4 Back



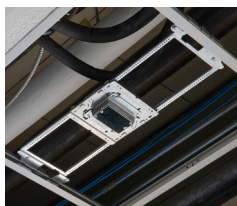
- 1 With bracket fully collapsed, align next to stud with right side at the floor.
- 2 Install sheet metal screw into pivot point.
- 3 Rotate bracket around the installed screw at the pivot point.
- 4 Expand bracket, snap to stud and affix with screws. Center line will be 18" AFF.

Ceiling clips for BBT brackets

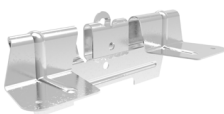
Can be used with BBT-HF and BBT-WF. See page 84.

Read safety/installation instruction sheets in packages before use. These products are designed for positioning only. No load rating.





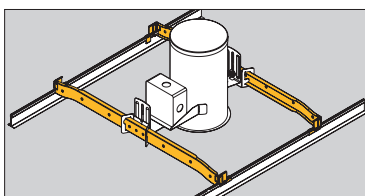
Ceiling clips for BBT brackets



- Installs onto BBT-WF with two screws for installation into T-Grid ceilings
- Box attached with BBA or BBA-4 alignment bracket
- Wide support prevents bracket from rocking, and rigidity of BBT-WF reduces pressure on the ceiling tile
- Sheet metal screw location and loop hole for support drop wire aids compliance with NEC 314.23 (D)
- Install fire alarm boxes, lighting controls, etc. into the ceiling grid using the same brackets installed in the wall, reducing overall SKU count
- Install multiple boxes into the same ceiling tile
- Available for field or prefab shop assembly, or preassembled on a BBT-WF bracket with box and cover preinstalled

The combination of the BBT-WF and BBT-TG bracket is not listed to support a luminaire.

UPC/Part Number	Catalog Number	Description	Box Qty.
79903885065	BBT-TG	Ceiling clips for BBT brackets	100



QuikFix Fastening System

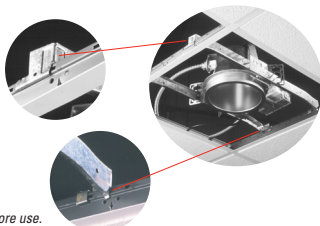


- New QuikFix™ Fastening System mounts spec grade downlights 50% faster than "wire bound" installation methods.
- QuikFix System is pre-sized for 24" spacing.
- No tools required.
- Recommended for use in seismic areas.
- UL listed for fixture support up to 50 lbs.

UPC/Part Number	Catalog Number	Description	Box Qty.
78205199873	BA40	Fixture Bar	20 pair

Patent # 6286265

- Innovative design features offset bar hangers with integral locking tabs that secure downlights to T-Bar and prevent lifting or sliding.



Read safety/installation instruction sheets in packages before use. These products are designed for positioning only. No load rating.